

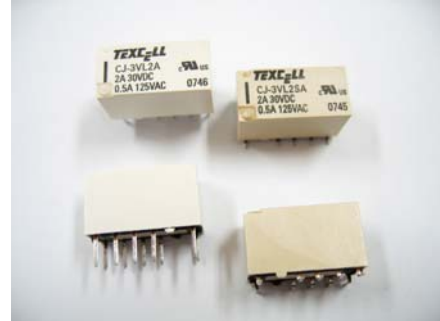


TITLE

SPECIFICATIONS

PAGE 1/8

- 3kV dielectric strength between coil and contacts
- Surge withstand voltage up to 2500VAC
- SMT and DIP types available
- Bifurcated contacts
- Single side stable and latching type available



1. TYPE: CJ RELAY (DIP & SMT type)
2. COIL (Temperature Rise: 50K max.)

1) Single Side Stable

NOMINAL VOLTAGE (VDC)	PICK-UP VOLTAGE (VDC)	DROP-OUT VOLTAGE (VDC)	COIL RESISTANCE (Ω) 23℃	NOMINAL POWER (mW)	MAX ALLOWABLE VOLTAGE (VDC)
1.5	1.13	0.15	16 x (1±10%)	140	2.2
3	2.25	0.3	64.3 x (1±10%)	140	4.5
4.5	3.38	0.45	145 x (1±10%)	140	6.7
5	3.75	0.5	178 x (1±10%)	140	7.5
6	4.5	0.6	257 x (1±10%)	140	9
9	6.75	0.9	579 x (1±10%)	140	13.5
12	9	1.2	1028 x (1±10%)	140	18
24	18	2.4	4114 x (1±10%)	140	36
48	36	4.8	8533 x (1±10%)	270	57.6

(at 23℃)

TITLE
SPECIFICATIONS
PAGE 2/8
2) 1 coil latching

NOMINAL VOLTAGE (VDC)	SET VOLTAGE (VDC)	RESET VOLTAGE (VDC)	COIL RESISTANCE (Ω) 23℃	NOMINAL POWER (mW)	MAX ALLOWABLE VOLTAGE (VDC)
1.5	1.13	1.13	22.5 x (1±10%)	100	2.7
3	2.25	2.25	90 x (1±10%)	100	5.4
4.5	3.38	3.38	203 x (1±10%)	100	8.1
5	3.75	3.75	250 x (1±10%)	100	9
6	4.5	4.5	360 x (1±10%)	100	10.8
9	6.75	6.75	810 x (1±10%)	100	16.2
12	9	9	1440 x (1±10%)	100	21.6
24	18	18	5760 x (1±10%)	100	43.2

(at 23℃)

3) 2 coil latching

NOMINAL VOLTAGE (VDC)	SET VOLTAGE (VDC)	RESET VOLTAGE (VDC)	COIL RESISTANCE (Ω) 23℃	NOMINAL POWER (mW)	MAX ALLOWABLE VOLTAGE (VDC)
1.5	1.13	1.13	11.2 x (1±10%)	200	2.2
3	2.25	2.25	45 x (1±10%)	200	4.5
4.5	3.38	3.38	101 x (1±10%)	200	6.7
5	3.75	3.75	125 x (1±10%)	200	7.5
6	4.5	4.5	180 x (1±10%)	200	9
9	6.75	6.75	405 x (1±10%)	200	13.5
12	9	9	720 x (1±10%)	200	18
24	18	18	2880 x (1±10%)	200	36

(at 23℃)

TITLE

SPECIFICATIONS

PAGE 3/8

3. CONTACTS

- 3-1) Contact arrangement : 2 Form C
- 3-2) Contact Material : AgNi + Au plated
- 3-3) Contact resistance : 50m Ω at 0.1A 6VDC
- 3-4) Contact ratings (Resistive load) : 2A 30VDC, 0.5A 125VAC
- 3-5) Max. switching voltage : 220VDC/250VAC
- 3-6) Max. switching current : 2A
- 3-7) Max. switching power : 62.5VA/60W
- 3-8) Minimum applicable load : 10mV 10 μ A

4. CHARACTERISTICS

- 4-1) Operate time (Set time) : Max. 4msec
- 4-2) Release time (Reset time) : Max. 4msec
- 4-3) Insulation resistance : 1000M Ω (at 500VDC)
- 4-4) Dielectric strength
 - ⊙ Between open contacts : AC 1,000 Volt / one minute
 - ⊙ Between coil and contacts :
 - “A” : AC 2,000Volt / one minute
 - “H” : AC 3,000Volt / one minute
 - ⊙ Between contact sets : AC 1,500 Volt / one minute
- 4-5) Surge withstand voltage
 - ⊙ Between open contacts(10 x 160 μ s) : 1,500VAC (FCC part68)
 - ⊙ Between coil & contacts(2 x 10 μ s) : 2,500VAC (Telecordia)
- 4-6) Vibration resistance :
 - ⊙ Functional : 10 to 55Hz 3.3mm DA
 - ⊙ Destructive : 10 to 55Hz 5.0mm DA
- 4-7) Shock resistance
 - ⊙ Functional : 750m/s² (75g)
 - ⊙ Destructive : 1000m/s² (100g)
- 4-8) Ambient temperature : -40 to + 85 $^{\circ}$ C
- 4-9) Humidity : 35 to 85% RH



TITLE

SPECIFICATIONS

PAGE 4/8

4-10) Life expectancy

- ⊙ Mechanical : 1×10^8 operations
- ⊙ Electrical : 5×10^5 operations (at 1A 30VDC)
 1×10^5 operations (at 2A 30VDC)
 1×10^5 operations (at 0.5A 125VAC)

4-11) Weight : Approx. 2g

4-12) Outline dimension (L x W x H) : 15.0 x 7.5 x 9.0mm

4-13) Safety standard : cUL

5. ORDERING INFORMATION

EX.) CJ - 5V L1 S R A

Coil Voltage	Sort	Terminal	Packing	Dielectric Strength
1.5, 3, 4.5, 5, 6, 9, 12, 24, 48VDC	Nil: single side stable L1: 1 coil latching L2: 2 coil latching	S: StandardSMT S1: Short terminal SMT Nil: DIP	R: Tape & reel packing (only for SMT) Nil: Tube packing	A: 2000VAC H: 3000VAC

* 48VDC coil voltage is only for single side stable version.

* 2 coil latching (L2) is only for 2kV dielectric strength (between coil and contacts).

** Disclaimer **

This data sheet is for the customer's reference. All the specifications are subject to change without notice. We could not evaluate all the performance and all parameters for every possible application. Thus the user should be in right position to choose the suitable product for own application. If there is any query, please contact to Texcell Netcom Co., Ltd. for the technical service. However, it is the user's responsibility to determine which product should be used only.

TO:	DATE:
TEXCELL NETCOM CO., LTD.	DRAWN BY: CHECKED BY:
DEVELOPMENT DEPT.	APPROVED BY:



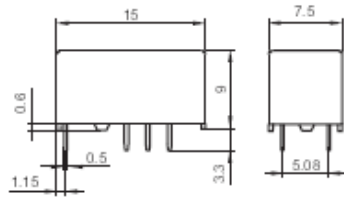
TITLE

DIMENSIONS

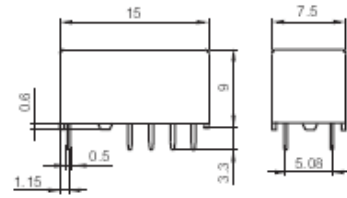
PAGE 5/8

Outline Dimensions
(DIP type)

Single side stable & 1 coil latching

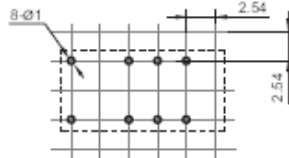


2 coils latching

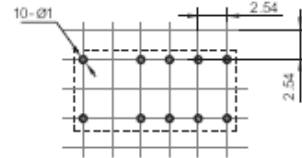


PCB Layout
(DIP type)
(Bottom view)

Single side stable & 1 coil latching



2 coils latching





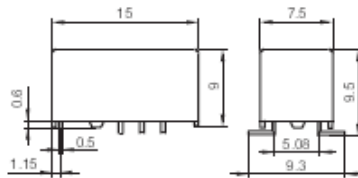
TITLE

DIMENSIONS

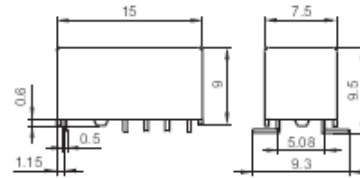
PAGE 6/8

Outline Dimensions
(S type: Standard SMT)

Single side stable & 1 coil latching

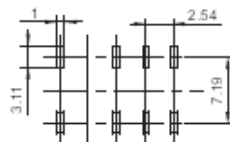


2 coils latching

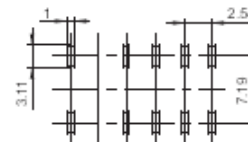


PCB Layout
(S type: Standard SMT)
(Bottom view)

Single side stable & 1 coil latching

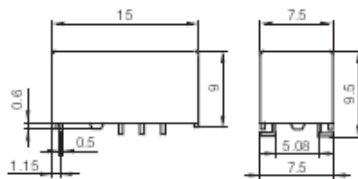


2 coils latching

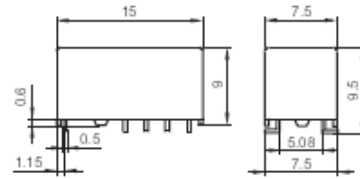


Outline Dimensions
(S1 type: Short terminal SMT)

Single side stable & 1 coil latching

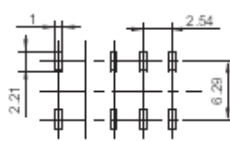


2 coils latching

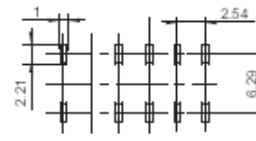


PCB Layout
(S1 type: Short terminal SMT)
(Bottom view)

Single side stable & 1 coil latching

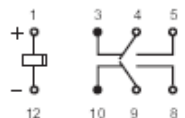


2 coils latching



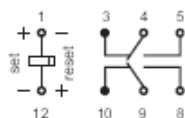
Wiring Diagram
(Bottom view)

Single side stable



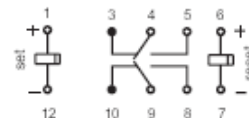
No energized condition

1 coil latching



reset condition

2 coils latching



reset condition

Notice

- Relay is on the "reset" status when being released from stock, with the consideration of shock risen from transit and relay mounting, relay would be changed to "set" status, therefore, when application (connecting the power supply), please reset the relay to "set" or "reset" status on request.
- In order to maintain "set" or "reset" status, energized voltage to coil should reach the rated voltage, impulse width should be 5 times more than "set" or "reset" time. Do not energize voltage to "set" coil and "reset" coil simultaneously. And also long energized.

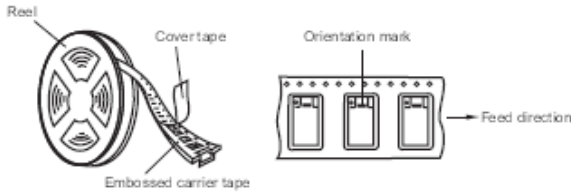


TITLE

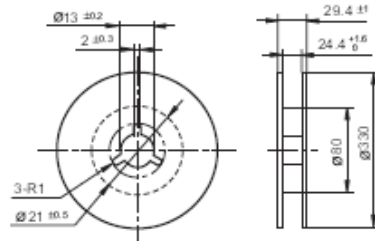
TYPE PACKING

PAGE 7/8

Direction of Relay Insertion

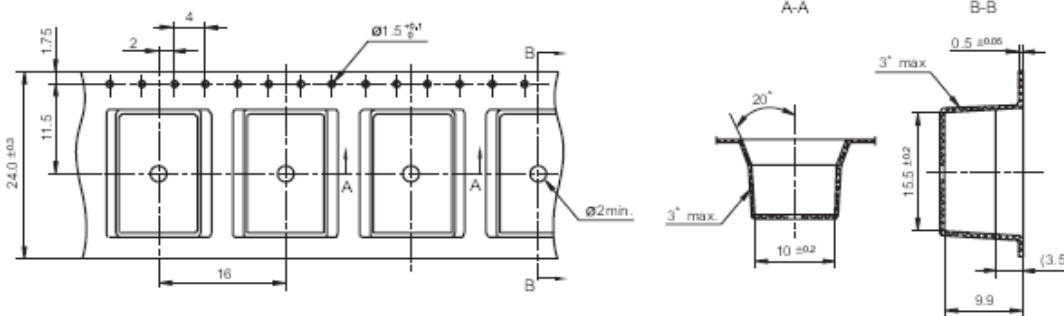


Reel Dimensions

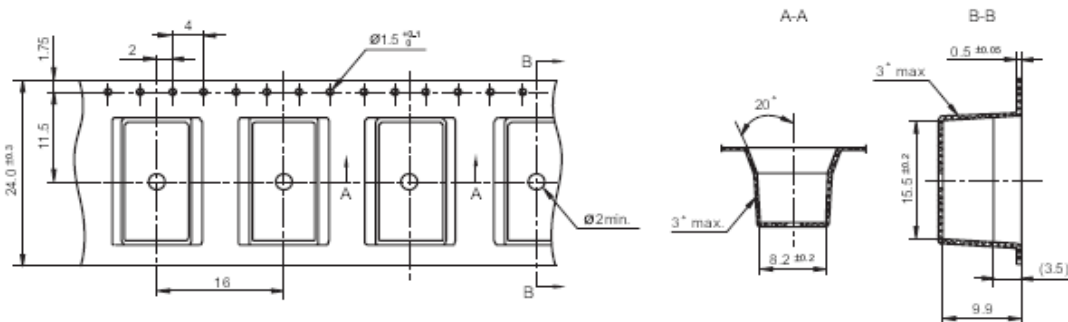


- Notes: 1) Packing: 400pcs/reel, 5 reels/carton.
2) MOQ for reel packing is 800pcs.

Tape Dimensions (S type: Standard SMT)



Tape Dimensions (S1 type: Short terminal SMT)



- Remark: 1) In case of no tolerance shown in outline dimension: outline dimension ≤ 1 mm, tolerance should be ± 0.2 mm; outline dimension > 1 mm and ≤ 5 mm, tolerance should be ± 0.3 mm; outline dimension > 5 mm, tolerance should be ± 0.4 mm.
2) The tolerance without indicating for PCB layout is always ± 0.1 mm.
3) The width of the gridding is 2.54mm.

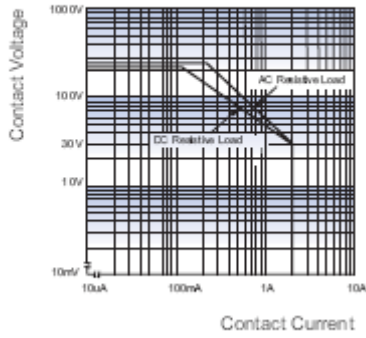


TITLE

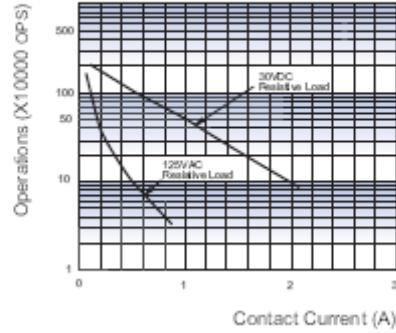
CHARAC. CURVES

PAGE 8/8

MAXIMUM SWITCHING POWER



ENDURANCE CURVE



TO:	DATE:
TEXCELL NETCOM CO., LTD.	DRAWN BY: CHECKED BY:
DEVELOPMENT DEPT.	APPROVED BY: