



TITLE

SPECIFICATIONS

PAGE 1/6

- 1 form A
- 20A switching capability
- High dielectric strength 5,000VAC
(between coil and contact)
- PCB & QC layouts



1. TYPE: TX-TMP RELAY (P/C Board & QC type)
2. COIL

COIL VOLTAGE (VDC)	PICK-UP VOLTAGE (VDC)	DROP-OUT VOLTAGE (VDC)	MAX-ALLOWABLE VOLTAGE (VDC)	COIL RESISTANCE (Ω)	COIL POWER (mW)
5	3.75	0.25	6.50	50 x (1±10%)	500
6	4.50	0.30	7.80	72 x (1±10%)	
9	6.75	0.45	11.70	162 x (1±10%)	
12	9.00	0.60	15.60	288 x (1±10%)	
18	13.50	0.90	23.40	648 x (1±10%)	
24	18.00	1.20	31.20	1152 x (1±10%)	

(at 23°C)

* Note: When requiring pick-up voltage <75% of coil voltage, special order allowed.

3. CONTACTS

- 3-1) Contact arrangement : 1 Form A
- 3-2) Contact material : AgSnO²
- 3-3) Contact resistance : Max. 100mΩ at 6VDC 1A
- 3-4) Contact ratings : 1.5HP 250VAC
20A 250VAC
- 3-5) Max. switching voltage : 30VDC/250VAC
- 3-6) Max. switching current : 20A
- 3-7) Max. switching power : 5000VA/480W

4. CHARACTERISTICS



TITLE

SPECIFICATIONS

PAGE 2/6

- 4-1) Operate time (at nomi. volt.) : Max. 15msec
- 4-2) Release time (at nomi. volt.) : Max. 5msec
- 4-3) Insulation resistance : 1000MΩ (at 500VDC)
- 4-4) Dielectric strength
 - ⊙ Between open contacts : AC 1000Volt / one minute
 - ⊙ Between coil and contacts : AC 5,000Volt / one minute
- 4-5) Vibration resistance : 10 to 55Hz, 1.5mm DA
- 4-6) Shock resistance
 - ⊙ Functional : 100 m/s² (10g)
 - ⊙ Destructive : 1000 m/s²(100g)
- 4-7) Ambient temperature : -40 to + 85℃
- 4-8) Humidity : 35 to 85% RH
- 4-9) Life expectancy
 - ⊙ Mechanical : 2,000,000 operations
 - ⊙ Electrical : 100,000 operations
- 4-10) Weight : Approx. 16.5g
- 4-11) Outline dimension (L x W x H) : 22.8 x 12.3 x 24.4mm

* Notes: The data shown above are initial values.

5. ORDERING INFORMATION

EX.) TX 11 TMP - D 24

Model	Contact Configuration	Terminal Type	Coil Voltage (VDC)
TX	11: 1 Form A	Nil : 1 type D: 2 type E: 3 type F: 4 type G: 5 type	5, 6, 9, 12, 18, 24

TO :	DATE :
TEXCELL NETCOM CO., LTD.	DRAWN BY: CHECK BY:
DEVELOPMENT DEPT	APPROVED BY:



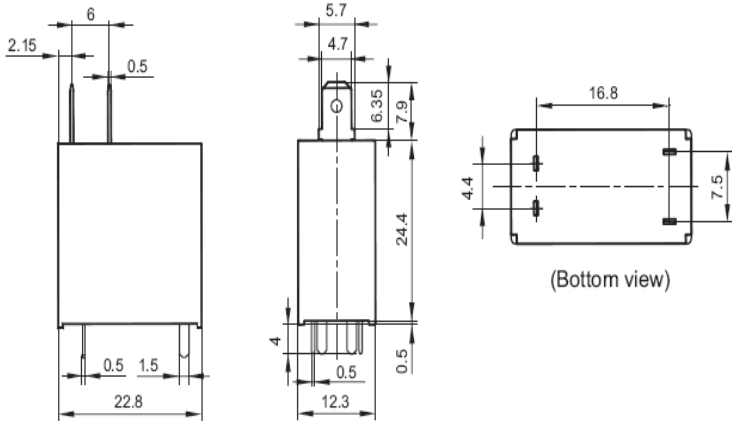
TITLE

DIMENSIONS

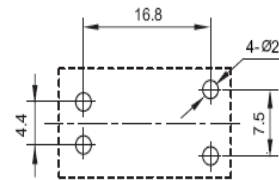
PAGE 3/6

1) 1 type

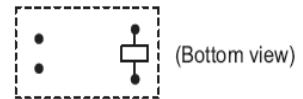
Outline Dimensions



PCB Layout (Bottom view)

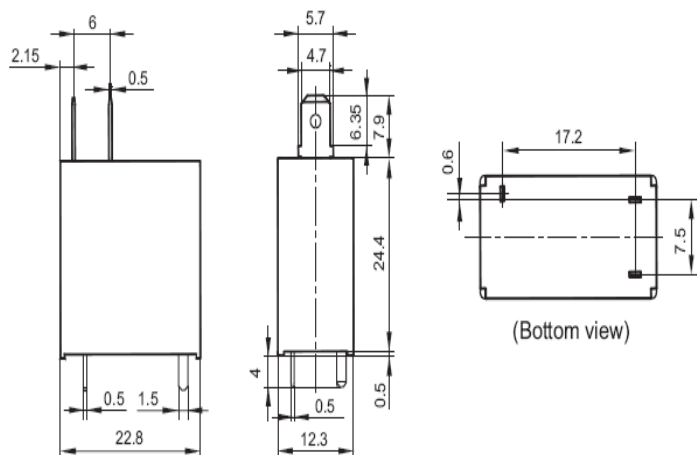


Wiring Diagram

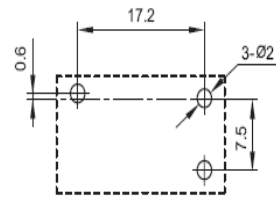


2) 2 type

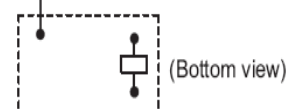
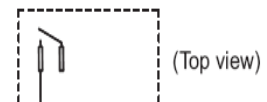
Outline Dimensions



PCB Layout (Bottom view)



Wiring Diagram





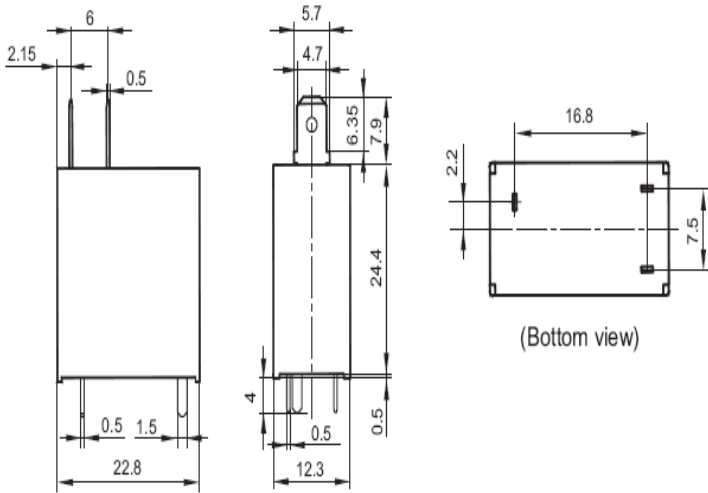
TITLE

DIMENSIONS

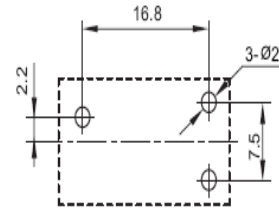
PAGE 4/6

3) 3 type

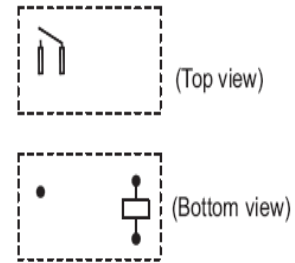
Outline Dimensions



PCB Layout (Bottom view)

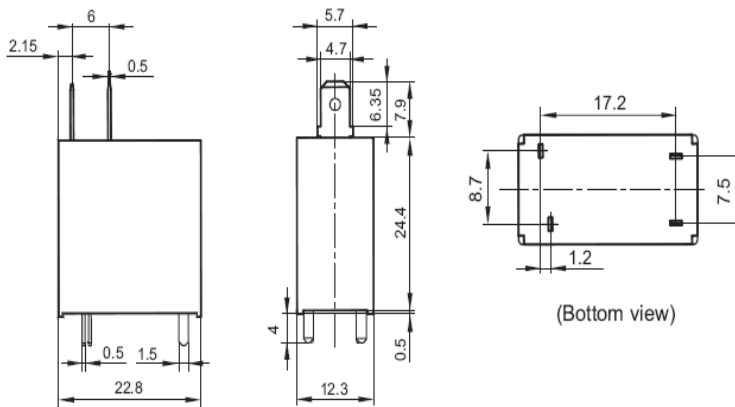


Wiring Diagram

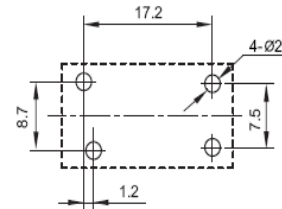


4) 4 type

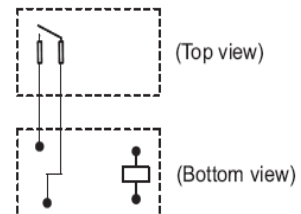
Outline Dimensions



PCB Layout (Bottom view)



Wiring Diagram





TITLE

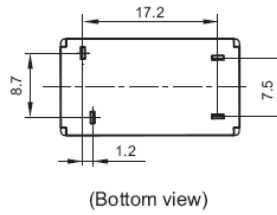
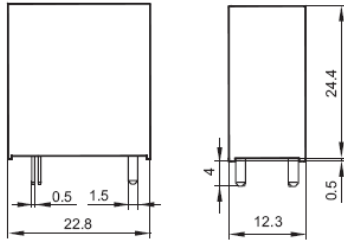
DIMENSIONS

PAGE 5/6

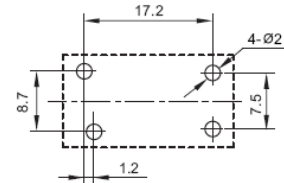
5) 5 type

4 type:

Outline Dimensions



PCB Layout (Bottom view)



Wiring Diagram



(Bottom view)

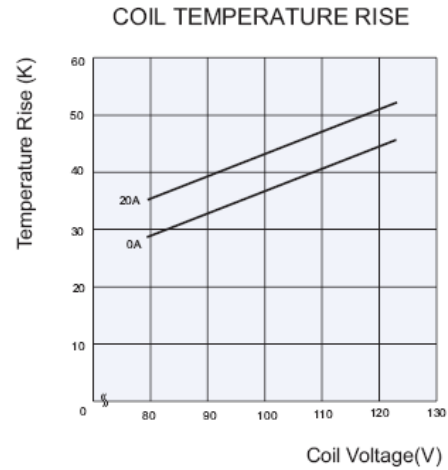
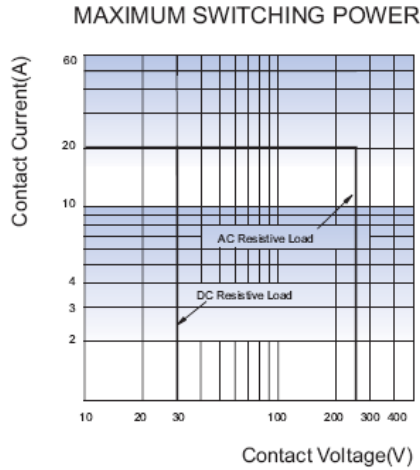
- Remark: 1) In case of no tolerance shown in outline dimension: outline dimension ≤ 1 mm, tolerance should be ± 0.2 mm; outline dimension > 1 mm and ≤ 5 mm, tolerance should be ± 0.3 mm; outline dimension > 5 mm, tolerance should be ± 0.4 mm.
2) The tolerance without indicating for PCB layout is always ± 0.1 mm.



TITLE

CHARACTERISTIC CURVE

PAGE 6/6



**** Disclaimer ****

This data sheet is for the customer's reference. All the specifications are subject to change without notice. We could not evaluate all the performance and all parameters for every possible application. Thus the user should be in right position to choose the suitable product for own application. If there is any query, please contact to Texcell Netcom Co., Ltd. for the technical service. However, it is the user's responsibility to determine which product should be used only.

TO:	DATE:
TEXCELL NETCOM CO., LTD.	DRAWN BY: CHECKED BY:
DEVELOPMENT DEPT.	APPROVED BY: