



TITLE

SPECIFICATIONS

PAGE 1/6

- 30A switching capability
- 2.5kV dielectric strength between coil and contacts
- Heavy load up to 7,200VAC
- Class F insulation available



1. TYPE: TNC RELAY (Quick Connection type)

2. COIL

1) DC type

NOMINAL VOLTAGE (VDC)	PICK-UP VOLTAGE (VDC)	DROP-OUT VOLTAGE (VDC)	MAX ALLOWABLE VOLTAGE (VDC)	COIL RESISTANCE (Ω)	COIL POWER (mW)
5	3.75	0.5	6.5	27 x (1±10%)	900
6	4.50	0.6	7.8	40 x (1±10%)	
9	6.75	0.9	11.7	97 x (1±10%)	
12	9.00	1.2	15.6	155 x (1±10%)	
15	11.25	1.5	19.5	256 x (1±10%)	
18	13.50	1.8	23.4	380 x (1±10%)	
24	18.00	2.4	31.2	660 x (1±10%)	
48	36.00	4.8	62.4	2560 x (1±10%)	
70	52.50	7.0	91	5500 x (1±10%)	
110	82.50	11	143	13450 x (1±10%)	

(At 23°C)

* When requiring pick-up voltage <80% of nominal voltage, special order allowed.



TITLE

SPECIFICATIONS

PAGE 2/6

2) AC type

NOMINAL VOLTAGE (VAC)	PICK-UP VOLTAGE (VAC)	DROP-OUT VOLTAGE (VAC)	MAX ALLOWABLE VOLTAGE (VDC)	COIL RESISTANCE (Ω)	COIL POWER (VA)
12	9.6	2.4	15.6	25 x (1±10%)	2
24	19.2	4.8	31.2	100 x (1±10%)	
120	96.0	24	156	2500 x (1±10%)	
208	166.4	41	270.4	11000 x (1±10%)	
220/240	192	48	286	13490 x (1±10%)	
277	220	54	360.1	15000 x (1±10%)	

(at 23°C)

* When requiring pick-up voltage < 80% of nominal voltage, special order allowed.

3. CONTACTS

3-1) Contact Arrangement : 1 Form A, 1 Form B, 1 Form C

3-2) Contact Material : AgCdO, AgSnO₂

3-4) Contact resistance : 50m Ω at 1A 24VDC

3-5) Max. switching capacity : 7200VA/560W (1 Form A)

3600VA/280W (1 Form B)

4800VA/560W (1 Form C - NO)

2400VA/280W (1 Form C - NC)

3-6) Max. switching voltage : 277VAC/28VDC

3-7) Max. switching current : 40A (1 Form A)

15A (1 Form B)

20A (1 Form C - NO)

10A (1 Form C - NC)



TITLE

SPECIFICATIONS

PAGE 3/6

- 3-8) Contact rating : 30A/240VAC, 20A/28VDC (1 Form A)
15A/240VAC, 10A/28VDC (1 Form B)
20A/240VAC, 20A/28VDV (1 Form C - NO)
10A/240VAC, 10A/28VDC (1 Form C - NC)

4. CHARACTERISTICS

- 4-1) Insulation resistance : 1000M Ω (at 500VDC)
- 4-2) Dielectric strength
- ⊙ Between coil and contacts : AC 2500 Volt / one minute
 - ⊙ Between open contacts : AC 1500 Volt / one minute
- 4-3) Operate time (at nomi. Volt.) : Max. 15msec
- 4-4) Release time (at nomi. Volt.) : Max. 10msec
- 4-5) Ambient temperature
- ⊙ Class B : DC : -55 $^{\circ}$ C to 85 $^{\circ}$ C / AC : -55 $^{\circ}$ C to 60 $^{\circ}$ C
 - ⊙ Class F : DC : -55 $^{\circ}$ C to 105 $^{\circ}$ C / AC : -55 $^{\circ}$ C to 85 $^{\circ}$ C
- 4-6) Shock resistance
- ⊙ Functional : 98m/s²
 - ⊙ Destructive : 980m/s²
- 4-7) Vibration resistance : 10Hz to 55Hz 1.5mm DA
- 4-8) Humidity : 98% RH, 40 $^{\circ}$ C
- 4-9) Life expectancy
- ⊙ Mechanical : 1x10⁷ operations
 - ⊙ Electrical : 1x10⁵ operations
- 4-10) Weight : Approx. 36g
- 4-11) Outline dimension (L x W x H) : 50.2 x 27.5 x 27.8 mm



TITLE

SPECIFICATIONS

PAGE 4/6

5. ORDERING INFORMATION

EX.) TNC 11 - D12 F K

Contact Arrangement	Coil Voltage	Insulation Standard	Coil Terminal Width
11 : 1 FORM A	D : 5 to 110 VDC	Nil : Class B	K : 4.8mm
1 : 1 FORM C	A : 12 to 277VAC	F : Class F	Nil : 2.8mm

**** Disclaimer ****

This data sheet is for the customer's reference. All the specifications are subject to change without notice. We could not evaluate all the performance and all parameters for every possible application. Thus the user should be in right position to choose the suitable product for own application. If there is any query, please contact to Texcell Netcom Co., Ltd. for the technical service. However, it is the user's responsibility to determine which product should be used only.

TO:	DATE:
TEXCELL NETCOM CO., LTD.	DRAWN BY: CHECKED BY:
DEVELOPMENT DEPT.	APPROVED BY:



TITLE

DIMENSIONS

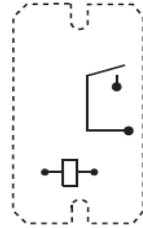
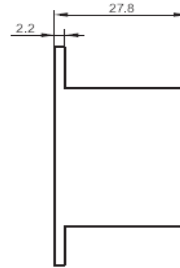
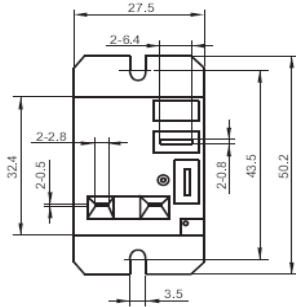
PAGE 5/6

1 Form A

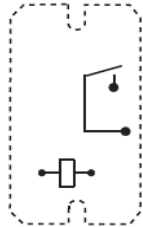
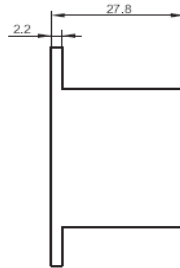
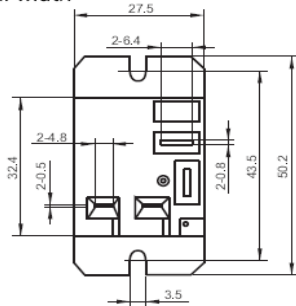
Outline Dimensions

Wiring Diagram
(Top view)

2.8mm Terminal width

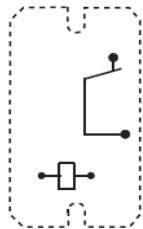
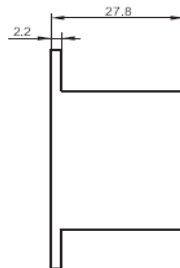
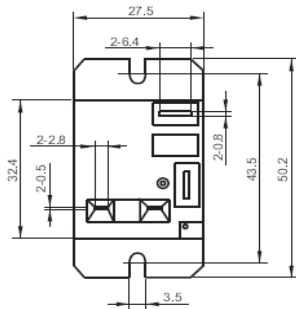


4.8mm Terminal width

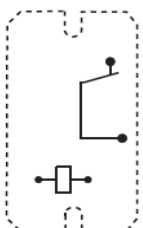
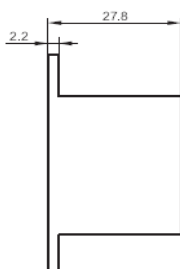
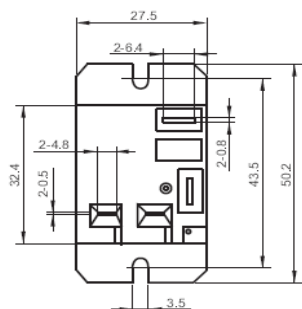


1 Form B

2.8mm Terminal width



4.8mm Terminal width





TITLE

CHARACTERISTIC CURVE

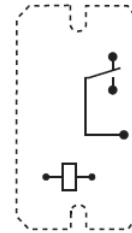
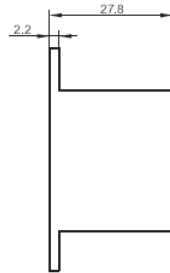
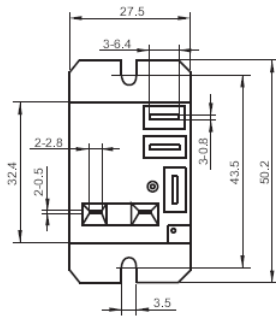
PAGE 6/6

1 Form C

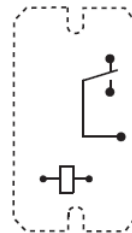
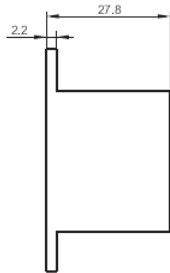
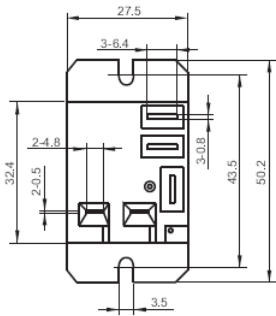
Outline Dimensions

Wiring Diagram
(Top view)

2.8mm Terminal width

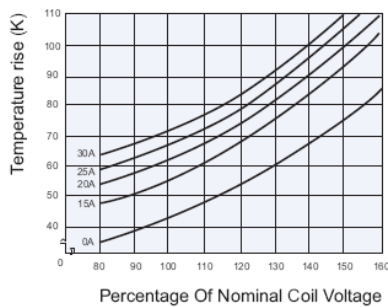


4.8mm Terminal width

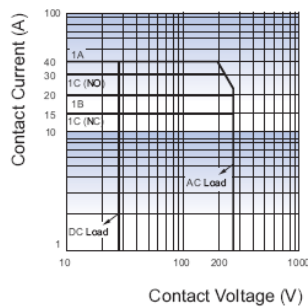


Remark: In case of no tolerance shown in outline dimension: outline dimension $\leq 1\text{mm}$, tolerance should be $\pm 0.2\text{mm}$; outline dimension $> 1\text{mm}$ and $\leq 5\text{mm}$, tolerance should be $\pm 0.3\text{mm}$; outline dimension $> 5\text{mm}$, tolerance should be $\pm 0.4\text{mm}$.

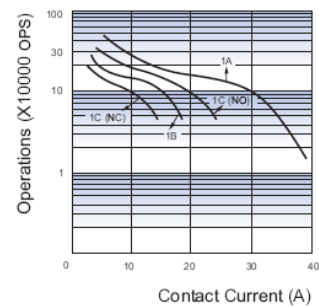
COIL TEMPERATURE RISE



MAXIMUM SWITCHING POWER



ENDURANCE CURVE



TO:	DATE:
TEXCELL NETCOM CO., LTD.	DRAWN BY: CHECKED BY:
DEVELOPMENT DEPT.	APPROVED BY: